
WARWICKSHIRE WASTE PARTNERSHIP

The **Warwickshire Waste Partnership** will meet at the **SHIRE HALL, WARWICK** on **TUESDAY** the 14th June 2011 at 2:00pm

AGENDA

1. **Apologies**
2. **Disclosures of personal and prejudicial interests**
3. **Minutes of the meeting held on 8 March 2011**
4. **Future Waste Disposal Plan**
5. **Waste Initiatives Update – brief update from each authority**
6. **Sub-regional Working – verbal update**
7. **2010/11 Waste Data – update**
8. **Using the results of the 2010 Waste Study to improve recycling in Warwickshire**
9. **The Warwickshire Waste Partnership Business Plan – verbal update**
10. **Waste Core Strategy Development**
Presentation by Adam James
11. **Visit to Material Recycling Facility (MRF) site, Ettington**
Feedback from members
12. **Agenda item suggestions for next meeting**
13. **Confirmation of future meeting dates (Tuesdays, 2:00pm, Shire Hall)**
 - 27 September 2011
 - 6 December 2011
 - 6 March 2012
14. **Any urgent items**

JIM GRAHAM
Secretary of the Partnership
Shire Hall
Warwick

Membership of the Warwickshire Waste Partnership

North Warwickshire Borough Council

Councillor Hayden Phillips (Councillor Ann Lewis - Substitute)

Nuneaton and Bedworth Borough Council

Councillor Bill Sheppard (Substitute - none)

Rugby Borough Council

Councillor Dr. Mark Williams (Substitute - none)

Stratford-on-Avon District Council

Councillor Mike Brain (Substitute - none)

Warwick District Council

Councillor Dave Shilton (Councillor Norman Vincett - Substitute)

Warwickshire County Council

Councillors Jeff Clarke, Alan Cockburn (Chair), Michael Doody, Ray Sweet and John Whitehouse.

**General enquiries on these agenda papers should be made to:
Richard Maybey, Resources Group, Warwickshire County Council
Shire Hall, Warwick CV34 4RR**

T: 01926 47 6876

E: richardmaybey@warwickshire.gov.uk

**Enquiries relating to specific reports should be made to the officer
mentioned in the report**

The **WARWICKSHIRE WASTE PARTNERSHIP**
met at the Shire Hall, Warwick on 8 **March 2011**

Present:

North Warwickshire Borough Council

Officer Richard Dobbs

Nuneaton and Bedworth Borough Council

Councillor Bill Sheppard

Officer Brent Davis

Rugby Borough Council

Councillor Carolyn Robbins

Officer Sean Lawson

Stratford-on-Avon District Council

Councillor Mike Brain

Officer Olly Scholefield

Warwick District Council

Councillor Dave Shilton (in the Chair)

Officer Becky Davies

Warwickshire County Council

Councillor Penny Bould

Councillor John Whitehouse

Officers

Kitran Eastman

Glenn Fleet

Jean Hardwick

Ian Marriott

Martin Stott

Laura Vesty

1. Apologies

Apologies for absence were received from Councillors Alan Cockburn, Tilly May and Dr. Mark Williams.

In the absence of the Councillor Alan Cockburn (Chair), Councillor Dave Shilton chaired the meeting.

Welcome and thanks

The Chair welcomed Councillor Mike Brain to his first meeting of the Partnership and asked him to convey to Councillor Simon Jackson Members' thanks for his contribution to the work of the Partnership and to wish him well in his future portfolio role.

Update on Partner Representatives

At the invitation of the Chair each district/borough confirmed their current Membership as follows:

North Warwickshire – Councillor Tilly May (substitute - Council S Swann)

Nuneaton and Bedworth – Councillor Bill Sheppard (substitute – none)

Rugby – Dr. Mark Williams (substitute – Councillor Carolyn Robbins)

Stratford – Councillor Mike Brain (substitute – none)

Warwick - Councillor Dave Shilton (Councillor N Vincett – substitute)

County Council – Penny Bould, Alan Cockburn (Chair), Michael Doody, John Whitehouse and a vacancy.

The Chair proposed that Councillor Jeff Clarke should fill the County Council vacancy and the Partnership confirmed their agreement to this proposal. (Note for the minutes: The filling of this vacancy will need to be agreed by the County Council).

2. Disclosures of Personal and Prejudicial Interests

- (1) Councillor John Whitehouse declared a personal interest having made a charitable donation to Friends of the Earth;
- (2) Councillor Penny Bould declared a personal interest as a Member of Friends of the Earth and Warwick District Tree Warden Network.

3. Minutes of the meeting held on 7 December 2010

(a) Minutes

Resolved that the minutes of the Partnership meeting held on 21 September 2010 be approved and be signed by the Chair.

(b) Matters Arising

None.

4. Presentation on the results of the Waste Study conducted in 2010

Kitran Eastman, with the aid of a power point presentation (copy circulated at the meeting) reported on the results from the waste composition analysis carried out in July.

She highlighted that, in percentage terms, each district produced similar waste but, for each waste stream, Nuneaton and Bedworth and North Warwickshire overall produced larger amounts of waste than the other districts. Richard Dobbs commented that it was difficult to understand why North Warwickshire produced more waste when it was a predominantly rural area. Kitran responded by saying that more work could be done on assessing what waste might come from outside the county and suggested that there might be more non-combustible construction and demolition work being undertaken in the north of the county.

During discussion the following comments were noted:

- (1) That the results of the Study were very interesting and a question was asked about the cost of the Study if it were to be repeated;
- (2) That a publicity campaign was needed, appropriately directed for each district, to encourage green and food waste collection;
- (3) A question was asked about the availability of information about the cost per household of food thrown away and Warwickshire compared with other authorities;
- (4) Concern was expressed about the amount of plastics going into landfill and the need to reduce packaging;
- (5) Concern was expressed about the impact of Defra Regulations and whether this had an impact on food waste collection.

In reply to the above Kitran Eastman, Glenn Fleet and Martin Stott said that –

- (1) the cost of the Study was not known but this could be established in order to assess whether it was worth repeating the exercise. In this connection Kitran reported on a letter received by the County Council from Eric Pickles, the Secretary of State, discouraging this type of exercise.
- (2) The national data was available to compare the results;
- (3) A cross district officer group was currently considering how to improve green waste separation and collection and could be asked to report their findings to the next meeting;
- (4) WRAP estimated that each household threw away approximately £500 to £600 per year of waste or excess food. It was also estimated that if this excess was reduced then it could save each household up to £100 per year in Council Tax.

With regard to plastic recycling the Chair said that Warwick District Council collected clear bottles only but a new contract was being negotiated and co-mingling might be the way forward.

The Partnership-

- (1) thanked Kitran Eastman for her presentation;

- (2) asked the countywide officer group to report to the next meeting on proposals for a campaign to reduce food waste;
- (3) Asked that a copy of the letter from the Secretary of State be circulated to Members of the Partnership.

5. Waste Initiative Update February 2011 – Update from each authority

The Partnership considered the attached report of the Officers Group which gave an update from each partner authority.

With regard to each authority area the following additional comments were made:

Stratford District Council

Olli Schofield reported that, with the help of the County Council, recycling on the go litter bins had been rolled out across Stratford District with 16 bins being provided in the major towns. He reported a good capture and collection system and hoped to continue this initiative by increasing the number of bins.

He said that this material was being processed through the new MRF Plant at Ettington, which would be officially opened next week, and a press release published shortly. (Sean Lawson to arrange a visit by the Partnership – see minute 9, future agenda items.)

North Warwickshire Borough Council

Richard Dobbs reported that the recycling scheme was going well and a tied bag system for plastics introduced (to overcome problems because of the recent windy weather) and was supporting the Love Food Hate Waste Campaign.

Nuneaton and Bedworth Borough Council

Brent Davies reported that kerbside collection was being rolled out to flats where recycling facilities had been requested by the occupiers. The most important issue was that the Council had made a firm decision to move to an alternate week collection system but was not sure whether it would be co-mingled or dual-stream collection. Councillor Bill Sheppard said that the big concern for Nuneaton and Bedworth was food waste.

Rugby Borough Council

Councillor Carolyn Robbins reported that the round review should save money and would be a big issue for Rugby over the coming months.

Warwick District Council

Becky Davies referred to a trial to separate clear glass from the mixed glass collection they currently provide. There would be no change for residents, they would continue to present their glass bottles and jars mixed in the red box. The collection crews would separate the colours as they collected the glass. Clear glass could be sold for a much higher price (approx. £25 per tonne) when separated and since the price for mixed glass had drastically dropped to £2 a tonne this might be a worthwhile exercise. WDC was just awaiting the results of the trial to see whether it could be rolled out across all collection crews. In response to a Member's previous comment about educating the public on waste disposal, Becky reported that the team of Community Recycling Officers at WDC had recently written to all schools in the district offering to provide assemblies and/or classroom sessions about recycling. So far, the team had been into approx. 10 schools and had bookings for other schools and community groups also.

Warwickshire County Council

Laura Vesty reported on the County Council activities.

With regard to the consultation on the proposed reduction in opening days and times at the Household Waste Recycling Centre the Chair asked that consideration be given to the days on which refuse collections took place in Kenilworth. For example Kenilworth had its collections on Mondays and so this might be a more appropriate day to close Cherry Orchard HWRC as people would be more likely to make full use of the collection service. In response Laura Vesty said that the pre-consultation event would provide the opportunity to explain how the public consultation exercise would be undertaken and to take on board Members' comments. Following this process a number of options would be produced. Details of the event, which would take place on the 21 March 2011, would be circulated to Members.

The Launch of the "Love Food Hate Waste" campaign was taking place that day and involved 33 councils across the region over the next 12 month period. A number of campaigns would be carried out across the districts and boroughs and publicity material had been made available which officers were distributing to Partnership members.

Members noted the update report.

6. Q 3 Waste Data Update

Laura Vesty presented the provisional waste management data for quarter 3 2010/11 and in reply to a Member's suggestion said that future reports could include waste data per household.

7. 2011/12 Warwickshire Waste Partnership Business Plan – Update

Kitran Eastman said that the Business Plan was still being finalised and would have 5 key targets. Each of these targets would have a lead officer supported by a Member “Champion” and she hoped to have names allocated to each of these lead and support roles by the next meeting

8. Any other business

Surplus Charity Collection Goods

The Chair asked whether charities were allowed to take furniture collected from the kerbside and surplus to requirement, to the household waste disposal sites free of charge. He was enquiring particularly about the Kenilworth Lions charity collection.

In response Glenn Fleet said that charities could make application to his office for permission to dispose of surplus goods once a month and that each application would be considered on its merits. He said that charities should be urged not to collect goods that were unsuitable for reuse.

9. Future Agenda items

The Chair invited suggestions for items for future meetings:

Councillor Penny Bould expressed her concern about the amount of rubbish deposited on the verges of the roads around the county and enquired whether there was any aspect of this issue that the Partnership should discuss. The Chair said that councils were frequently criticised in the press about litter but this was a Highways Agency issue. Richard Dobbs said that North Warwickshire did not have the funds to clear up litter and had previously written to the Highways Agency without success on this matter. He said that whereas the Highways Agency was responsible for cleaning and maintaining dual carriageways this did not cover clearing up litter and was an ongoing problem with gaining safe access to the major roads.

The Partnership agreed to ask the Communities Overview and Scrutiny Committee that this might be an issue it could investigate. Councillor John Whitehouse (Chair of the Communities Overview and Scrutiny Committee) said he would ask the Labour spokesperson on that Committee to raise this issue.

The Partnership agreed the items for the next meeting as follows:

1. Visit to the MRF site at Ettington (Sean Lawson to arranged)
2. Future Disposal Plan post “Project Transform”
3. Waste Initiative from Each Authority (to be a standing future agenda item.)

10. Future Meeting Dates (2:00 p.m. Shire Hall) –

The Partnership noted the future meeting dates as follows-

14 June 2011
27 September 2011
6 December 2011
6 March 2012

.....
Chair of Partnership

The meeting closed at 4:15 p.m.

Warwickshire Waste Partnership - 14 June 2011

Future Waste Disposal Plan

Summary

This report gives an update on Warwickshire County Councils progress to develop alternative long term arrangements for waste disposal from 2013 following the closure of Project Transform in October 2010.

Recommendation

The partnership is asked to acknowledge the work being undertaken.

The partnership agree that if the legal requirement for a Joint Municipal Waste Management Strategy is abolished as part of the national waste review, a concise, high-level strategic document will be developed instead.

1. Introduction

- 1.1 A number of Warwickshire's landfill contracts expire in 2013 and it is proposed that these are replaced with a solution that supports the diversion of waste from landfill, in order to prevent the authority being fined for failing to achieve Landfill Allowance Targets (LAT's). It is therefore proposed that any waste process utilised uses technology to support the diversion of waste away from landfill.

2. Background

- 2.1 As a Waste Disposal Authority (WDA) Warwickshire County Council (WCC) currently relies heavily on the use of landfill sites to dispose of its residual municipal waste. In order to meet its landfill diversion targets there was, and still is, a need to increase recycling, reduce waste and develop alternative treatment options for managing Warwickshire's residual municipal waste.
- 2.2 The move to proceed with a new proposal follows the decision by Coventry and Solihull Councils in October 2010 to withdraw from Project Transform. The project was intended to procure a new residual waste treatment facility in Coventry for the three local authorities.

Warwickshire's Municipal Waste Management Strategy

- 2.3 Warwickshire's Municipal Waste Management Strategy was produced by the Warwickshire Waste Partnership and was adopted in October 2005. This has

been used to drive this agenda forward to date. The key strategic objectives of the strategy are to:-

- (i) Reduce the amount of waste produced in Warwickshire.
- (ii) Recycle and compost 40 – 45% of our waste by 2009/10 (We are now at 48% and expecting to achieve 60% by 2015).
- (iii) Limit the amount of waste disposed of to landfill – making use of existing waste treatment facilities.
- (iv) After maximising recycling and composting, treat all remaining waste using a thermal treatment system to produce heat and energy from a non-fossil source.

2.4 The first review of the Strategy was planned for 2010, but due to a delay in Government guidance this was postponed. It has now been suggested that the legal requirement for councils in two-tier local authority areas to work together to produce a waste management strategy, may be abolished as part of the national waste review.

2.5 If the legal requirement for a Strategy were abolished, it would still make sense to produce a “concise, high-level strategic document”. Any new document produced would need to address developments in legislation, policy and market forces and would take into account the improvements in performance achieved by partner authorities over the past five years.

2.6 Currently Warwickshire has achieved its 2009/10 recycling target and landfill diversion target and is predicted to meet its 2012/13 landfill diversion target, without the need to buy additional allowances. If we are to comply with 2019/20 targets, however, it is essential that we continue to progress our plans to contract or develop new residual waste treatment capacity, taking waste away from landfill.

3. Procurement

3.1 To ensure a long term and sustainable provision for processing waste, Cabinet approval was sought to commence a procurement process for a long term arrangement for the disposal of waste from 2013. The contract term suggested was 15 years, plus the option to extend by a further 10 years and the flexibility to adjust levels of waste material processed. This will enable the authority to revise and rebase inputs to accommodate new initiatives to reduce waste.

4. Achievements

4.1 Progress has been made in a number of key areas since the Cabinet report was submitted in November 2010.

4.2 A series of meetings have taken place with waste officers from neighbouring local authorities, in order to scope potential areas for partnership working and research best practice.

4.3 The timetable for the long term residual waste treatment procurement has been produced and approved by the strategic procurement team. Since its approval

the timetable has had some minor revisions to take into account meetings that have been scheduled since it was produced.

- 4.4 The procurement plan has been produced and approved by the strategic procurement team for comment and approval.
- 4.5 A Prior Information Notice (PIN) for the treatment and disposal of residual waste has been produced and published in the Official Journal of the European Union (OJEU).
- 4.6 A residual waste treatment Industry day has been scheduled for Friday 17 June. A press release for the industry day has been produced and circulated to the trade press. The release has been posted on the WCC website and will be circulated to other interested parties as appropriate. Confidential one to one sessions will take place with providers as part of the Industry Day.
- 4.7 An Overview and Scrutiny task and finish group relating to the treatment and disposal of residual waste will be held in July. To assist the Overview and Scrutiny Members understand the procurement process they will attend the Industry Day on 17 June. A talk on the various types of technology that can be used to treat residual waste took place on 13 May for those Members involved in the task and finish group. The Members have also assisted with the development of questions for the confidential one to ones sessions.
- 4.8 Initial meetings with the WCA's have taken place to discuss 'tipping' points for the new contract, this will help ensure that the contract is fit for purpose.
- 4.9 A risk assessment meeting for the procurement has taken place and a risk register is being developed.

5. Work Programme

- 5.1 Table 1 highlights the key goals over the next three months.

Table 1 – Key Goals of Long Term Residual Waste Treatment Options between June and August

Task	Date
Host Industry Day	17/6/11
Hold Confidential one to one sessions	17/6/11
Collate soft market testing data	1/7/11
Start to prepare procurement paperwork	5/7/11
Hold O&S Task and Finish Group	22/7/11
Make amendments to procurement paperwork following O&S Task and Finish Group	5/8/11
Prepare and publish OJEU	8/8/11
Issue PQQs	8/8/11

6. Conclusion

- 6.1 Substantial progress has been made with preparing the procurement documents and organising the Industry Day. Further work has been planned to effectively engage the Market, Members and the WCA's. Engaging key stakeholders at an early stage will help ensure any contract is fit for purpose and meets the needs of its users. The Waste Management Group will continue to draw on expertise from Legal, Finance and Procurement as necessary.

7. Financial Implications

- 7.1 Exceeding our landfill allowances could have serious financial implications. A fine of £150 for every tonne of waste that we landfill over and above our allowances will be levied, in addition during an EU target year the Government could pass a proportion of any EU fine onto a breaching authority.
- 7.2 At the present time Defra are consulting on changing the UK's approach to meeting the landfill diversion. As part of this the Landfill Allowance Trading Scheme (LATS) is being reviewed, to look at the role it could play in the future. One of new main drivers now being seen for diverting waste away from Landfill is the extension of the use of landfill tax, which will reach £80 per tonne by 2014/5. The increasing cost of landfill tax means that by 2014/15, landfill will cost in excess of £100 per tonne including both disposal and tax, compared with usage of 'other' technologies that are expected to cost in the region of £65 to £72 per tonne.

Enquiries: about this report should be made to Tamalyn Goodwin – Waste Project Officer, 01926 418064, email tamalyngoodwin@warwickshire.gov.uk

Background Papers

Cabinet Report, Post Project Transform – Future Waste Disposal Arrangements, 18 November 2010

Report Author: Tamalyn Goodwin, Waste Project Officer

Head of Service: Louise Wall, Sustainable Communities

Strategic Director: Paul Galland, Environment and Economy

Warwickshire Waste Partnership – 14 June 2011

Update on Warwickshire Partnership Current and Forthcoming Waste Initiatives

Report on behalf of the Officers Group

Summary

The report gives an update from each partner authority on current and forthcoming initiatives for the information of Warwickshire Waste Partnership.

Recommendation

The Waste Partnership is asked to acknowledge the work being undertaken in each partner authority.

1. Introduction

- 1.1 The following report provides an update on the various waste initiatives taking place in each authority area.
- 1.2 Authorities are working together to address the results of the Waste Composition Analysis including a Slim your Bin campaign and promotion of Love Food Hate Waste and home composting (see Communications plan following the results of the Waste Composition Analysis Report for further details)

2. North Warwickshire Borough Council

- 2.1 Successfully introduced plastic and cardboard kerbside recycling in October and the **Revised Kerbside Recycling Scheme** has produced a substantial rise in the percentage recycled. The outturn for the full year (April 2010 to March 2011) was 4% up on the previous year, this augurs well for the first full year of the revised service.
- 2.2 **Route optimisation** - Property identification across IT systems has delayed the completion of the initial routing. The final phase of this work is in process. After that we will have the ability to plan for changing scenarios e.g. moving to Lower House Farm and any other changes in service that may occur.
- 2.3 From surveys carried out the overall **participation rate** fell from 64% to 63.7% however, it was evident that where communications activities were carried out,

there was an increase of 5.9% in participation. Where no communication activities were carried, the survey showed a drop of 17.3%.

- 2.4 The Council has agreed to continue the post of Recycling Officer for a further twelve months.
- 2.5 **Flat Recycling** is being rolled out to enable residents of flats to participate in recycling collections.
- 2.6 Reprinting the "You can recycle more!" blue **leaflets for road shows**, with summer road shows currently being planned.
- 2.7 Holding stalls at **school** home time with questionnaires and goodies working with the extended schools co-ordinator.
- 2.8 Would like to carry out a targeted door stepping campaign to take place in the low participating areas and find out why people don't recycle during the summer, if funding would allow.
- 2.9 Are interested in developing a **new service leaflet guide**, to be delivered to all households, dependent on funding available.

3. Nuneaton and Bedworth Borough Council

- 3.1 The main focus will be the brand **new recycling service** to start at the end of October 2011. There is lots of work going on associated with this including route optimisation for the new collection rounds.
- 3.2 A communications plan is being produced to promote the new recycling service with at least 50 drop in sessions/road shows planned around Nuneaton and Bedworth.
- 3.3 The participation survey within NBBC indicated that participation rose from 71.8% to 74.3% after the promotional campaign.
- 3.4 Bins are currently being delivered to all schools and flats with the service to start in June.
- 3.5 WEEE kerbside collections trial has started and runs until September. Despite lots of items being presented it is not thought that the 3 tonne target will be met as the tonnage collected is low.

4. Rugby Borough Council

- 4.1 Letters were sent to all residents on 4 April regarding the changes to collection rounds. The new rounds have been re-scheduled resulting in a reduction of one in the number of collection crews.
- 4.2 Working with **schools** to promote recycling and providing classroom bags to make it easier for schools to recycle.

- 4.3 A kerbside textile collection will be carried out in association with local community groups
- 4.4 'Recycling on the go' containers are to be installed in the Town Centre

5. Warwick District Council

- 5.1 Successfully moved approximately 600 properties from weekly sack collection onto the main **Alternate Week Collection** scheme. Plans to move a further 2,000 properties over to the bin scheme this summer.
- 5.2 Finalising details of the **new waste contract** in preparation for the OJEU notice in June 2011.
- 5.3 **Slim your rubbish bin** campaign – Focussing on cotton nappy promotion and a trial incentive scheme, WEEE bank locations identified and in place and promotion of food waste capture.
- 5.2 Producing a recycling **educational DVD**
- 5.3 A waste composition analysis was carried out in **flats**. In some flats the chutes are being closed and bags are being provided to encourage recycling.
- 6.7 **Participation surveys** were carried out across the whole district. Five low participating areas are being worked on through door stepping, schools and targeted road shows to local shops and supermarkets.
- 6.8 **Recycling on the Go** - The Green Gang is being re-launched and more branded recycling bins are being introduced in play parks.
- 6.9 **Rewarding recycling** with thank you cards.

6. Stratford District Council

- 6.1 **WEEE recycling promotion** (in conjunction with Stratford District digital TV switchover) – April 2011.
- 6.2 **Easter recycling promotion** – May 2011.
- 6.3 **Green Office Week** (internal sustainability campaign) – 9 to 13 May.
- 6.4 **Recycling week** – 20th to 26th June 2011
- 6.5 Targeted **aerosol/ aluminium recycling** promotion – June/ July 2011.
- 6.6 **Food waste promotion** (joint initiative with waste collection contractor) summer 2011.
- 6.7 Promoting **recycling on the go**, Re-cycling litter bins to enable people to recycle at home and in town.

7. Warwickshire County Council

7.1 A number of tenders are still being worked on including:-

- (i) **Haulage Contract** – PQQs received.
- (ii) **Residual Waste Disposal** – An Industry Day is being held on 17 June – see update report on residual waste for further information.
- (iii) **Street sweepings** now out to tender.
- (iv) **Lower House Farm** - PQQs received, ITT is out at the beginning of June. Land Swap deal completed subject to IM properties fulfilling their obligations.
- (v) **Nuneaton HWRC** – PQQs in and the ITT due out soon.
- (vi) **Recyclables** – it has been agreed to set up a framework for the sale of recyclables from the HWRCs from 1 December.
- (vii) **Green waste** – Envar contract finished and following approval of an exemption, green waste is being sent to three different windrow composting sites already used in the north of the county. Carrying out soft market testing to investigate biowaste services in the north.
- (viii) **Hazardous waste disposal** – tender for the disposal of asbestos, plasterboard and chemical waste.

7.2 **Bringing HWRCs in house** - a great deal of work is taking place on this project as well as the procurement work. This includes working with legal and HR on staffing and TUPE, asset register and negotiations over ownership and purchasing equipment, vehicles etc.

Enquiries: about this report should be made to Laura Vesty – Waste Research and Statistics Officer, 01926 418064 e-mail lauravesty@warwickshire.gov.uk

Report Author: Laura Vesty

Head of Service: Louise Wall

Strategic Director: Paul Galland

Warwickshire Waste Partnership - 14 June 2011

Quarterly Waste and Recycling Data Update

Report of the Strategic Director for Environment and Economy on behalf of the Officers Group

Summary

Members of the Warwickshire Waste Partnership are presented with a quarterly update of waste and recycling figures at Disposal and Collection Authority level.

Recommendation

The Waste Partnership is asked to note the provisional data for the fourth quarter, January to March 2011.

- 1.1 This report contains a mixture of data taken from Waste Data Flow, from Warwickshire County Council in-house records and from recycling credit claims and at the publication of this report are considered **provisional estimates**
- 1.2 The figures should be treated as provisional as data may be changed after all authorities have reported their final data to the EA and DEFRA through the Waste Data Flow System.

Enquiries: about this report should be made to Laura Vesty, Waste Research and Statistics Officer from the Waste Management Group on 01926 41 8064. E-mail lauravesty@warwickshire.gov.uk

Provisional Waste Management Data 2010/11

1. Total Municipal Waste Arising and Disposal Route (Tonnes)

	January	February	March	Q4 Total	Q3 Total
Total Tonnes	22,314	18,776	24,615	65,705	61,595
Landfilled	7,985	5,462	8,130	21,577	19,273
Inert - Landfilled	190	188	599	977	861
Energy from Waste	4,935	4,753	3,598	13,286	12,282
Other Technology*	326	457	657	1,441	1,452
In-vessel Composting*	1,932	1,608	3,173	6,713	7,882
Windrow Composting*	600	720	2,030	3,349	4,556
Other Composting*	341	302	424	1,067	871
Recycling (HWRC)	1,226	959	1,233	3,417	2,690
Recycling (WCA)*	4,729	4,025	4,278	13,032	11,401
Reuse	50	302	493	845	459

*Other Technology – Refuse Derived Fuel

*Windrow composting – Outdoor composting of green garden waste from HWRCs, NBBC and NWBC

*In Vessel composting – Indoor controlled composting of garden and food waste from RBC, WDC, SDC

*Other composting – Chipboard and wood

*Recycling (WCA) – calculated using recycling credits. Split by month based on when recycling credit claim arrives NBBC and SDC monthly and NWBC, RBC and WDC quarterly.

2. Percentage of Waste by Disposal Route

	January	February	March	Q4 Total	Q3 Total
% Recycling	26.7%	26.5%	22.4%	25%	23.1%
% Composting	12.9%	14%	22.9%	17%	21.2%
% Reuse	0.2%	1.6%	2%	1.3%	0.52%
Total	39.8%	42.1%	47.3%	43.3%	45%
% Landfill	36.6%	30.1%	35.5%	34.3%	32.5%
% Energy from Waste and RDF	23.6%	27.7%	17.3%	22.4%	22.6%
Total	60.2%	57.8%	52.8%	56.7%	55%

3. Estimated Provisional Performance (Municipal)

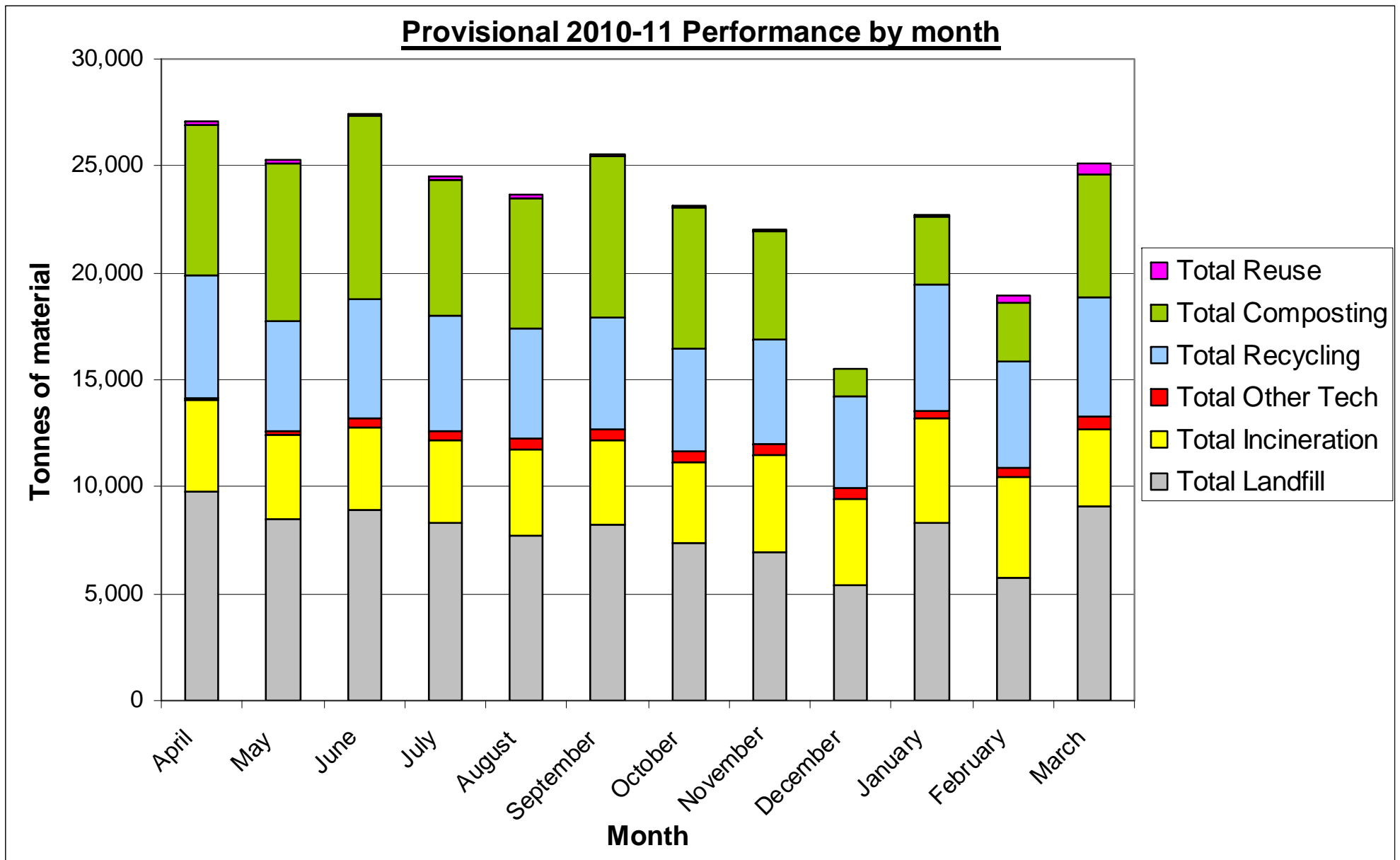
	Q4 2009/2010	Q4 2010/2011	% change from
Recycling Rate	15,995 tonnes 27.9%	17,294 tonnes 26.3%	X 1.6% Drop
Composting Rate	7,905 tonnes 13.8%	11,129 tonnes 16.9%	☺ 3.1% Rise
Recycling, Composting and Reuse Rate	24,197 tonnes 41.9%	28,423 tonnes 43.3%	☺ 1.4% Rise
Landfill Rate	26,669 tonnes 46.44%	22,554 tonnes 34.3%	☺ 12.1% Drop
Energy from Waste and RDF	6,830 tonnes 11.9%	14,727 tonnes 22.4%	☺ 10.5% Rise
Total Municipal Waste	67,251 tonnes	65,705 tonnes	☺ 2.3% Drop

4. Comparison of 2009-10 and 2010-11 Performance

	2009/2010		2010/2011 Municipal*	% change from
	Household	Municipal*		
Recycling Rate	63,871 tonnes 23.8%	66,900 tonnes 22.9%	64,677 tonnes 23%	☺ 0.1% Rise
Composting Rate	65,116 tonnes 24.3%	65,116 tonnes 22.3%	67,434 tonnes 24%	☺ 1.7% Rise
Recycling, Composting and Reuse Rate	129,336 tonnes 48.1%	132,016 tonnes 45.2%	130,405 tonnes 47%	☺ 1.8% Rise
Landfill Rate	112,174 tonnes 41.8%	129,006 tonnes 44.2%	94,213 tonnes 33.5%	☺ 10.7% Drop
Energy from Waste and RDF	27,247 tonnes 10.2%	31,040 tonnes 10.6%	54,655 tonnes 19.5%	☺ 8.9% Rise
Total Waste	268,458 tonnes	292,062 tonnes	280,979 tonnes	☺ 3.8% Drop

*Municipal waste is all waste under the remit of the Disposal Authority. It includes trade waste collected by collection authorities, trade waste taken to HWRCs, waste from schools and other municipal buildings and items such as inert waste, plasterboard and tyres as well as household waste.

NB. Last years household figures and some of this years data is taken from Waste Data Flow. All other figures are taken from Warwickshire County Council in-house records and at the publication of this report are considered **provisional estimates**.

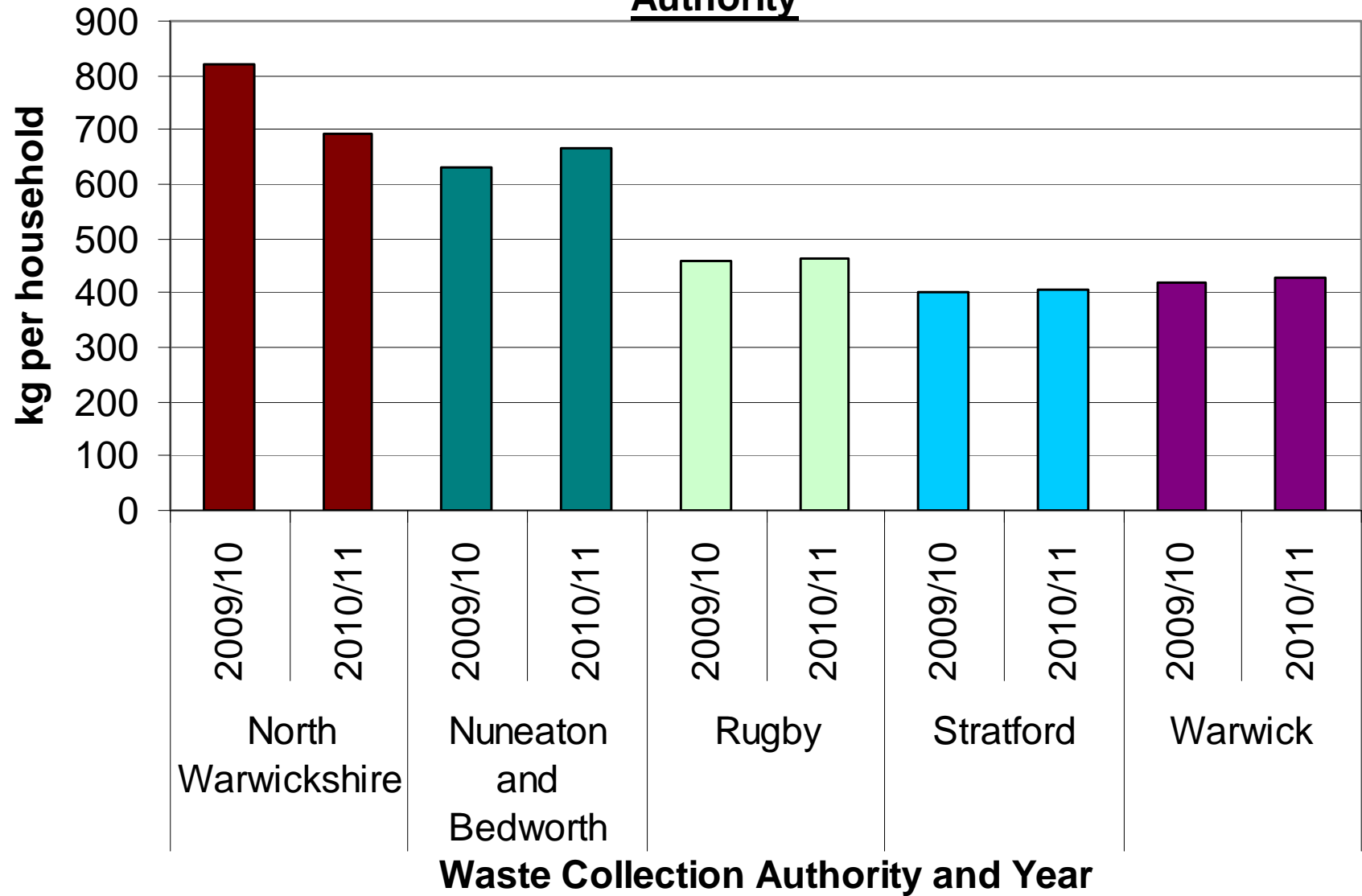


5. District Provisional Performance – Household waste

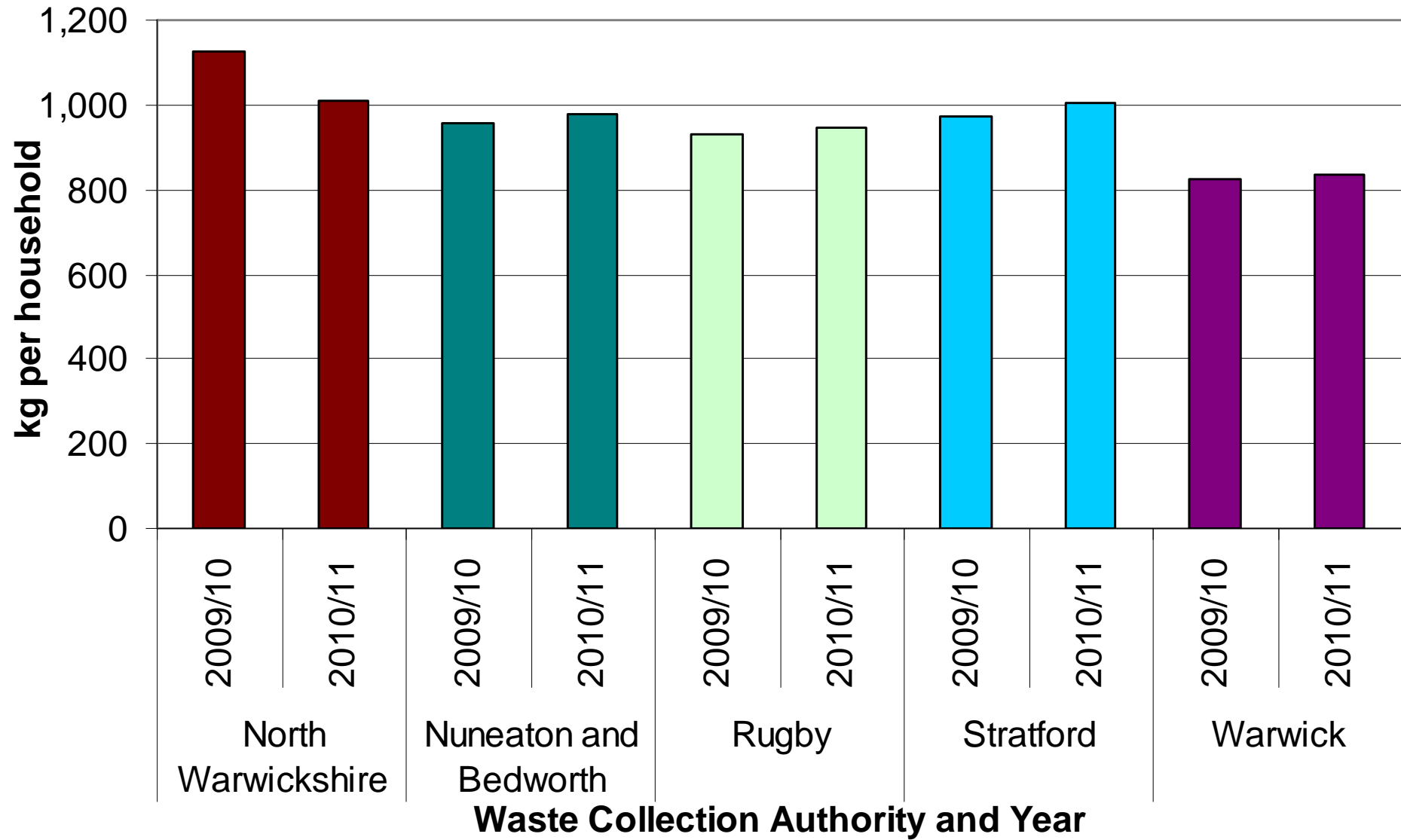
Note: All figures are household and from WDF apart from Q4 which is from in house records and therefore reporting differences will exist.

	North Warwickshire		Nuneaton and Bedworth		Rugby		Stratford		Warwick		Warwickshire (HWRC etc)	
	2009/10	2010/11	2009/10	2010/11	2009/10	2010/11	2009/10	2010/11	2009/10	2010/11	2009/10	2010/11
Number of households	26,741	26,741	53,822	53,822	42,751	42,751	53,899	53,899	59,884	59,884	237,097	237,097
Recycling Rate	2,994 tonnes 10%	3,325 tonnes 12%	8,924 tonnes 17%	8,588 tonnes 16%	10,575 tonnes 27%	10,621 tonnes 26%	14,272 tonnes 27%	14,777 tonnes 27%	10,963 tonnes 22%	10,960 tonnes 22%	19,172 tonnes 28%	16,406 tonnes 28%
Composting Rate	5,116 tonnes 17%	5,131 tonnes 19%	8,738 tonnes 17%	8,317 tonnes 16%	9,711 tonnes 24%	9,973 tonnes 25%	16,487 tonnes 31%	17,380 tonnes 32%	13,432 tonnes 27%	13,626 tonnes 27%	11,632 tonnes 17%	13,007 tonnes 23%
Recycling, Composting and Reuse Rate	8,110 tonnes 27%	8,456 tonnes 31%	17,663 tonnes 34%	16,905 tonnes 32%	20,319 tonnes 51%	20,598 tonnes 51%	30,758 tonnes 59%	32,157 tonnes 60%	24,400 tonnes 49%	24,586 tonnes 49%	30,766 tonnes 45%	27,691 tonnes 48%
Residual	21,945 tonnes 821kg/hh	18,556 tonnes 694kg/hh	33,896 tonnes 630kg/hh	35,788 tonnes 665kg/hh	19,529 tonnes 457kg/hh	19,743 tonnes 462kg/hh	21,711 tonnes 403kg/hh	21,848 tonnes 405kg/hh	25,092 tonnes 419kg/hh	25,500 tonnes 426kg/hh	37,873 tonnes	27,433 tonnes
Total	30,056 tonnes 1,124kg/hh	27,012 tonnes 1,010kg/hh	51,558 tonnes 958kg/hh	52,693 tonnes 979kg/hh	39,814 tonnes 931kg/hh	40,336 tonnes 944kg/hh	52,468 tonnes 973kg/hh	54,005 tonnes 1,002kg/hh	49,492 tonnes 826kg/hh	50,086 tonnes 836kg/hh	68,674 tonnes	56,847 tonnes

Residual Waste (non recycled) per household by Collection Authority



Total Waste produced per household by Collection Authority



Warwickshire Waste Partnership - 14 June 2011

Using the Results of the 2010 Waste Study to Improve Recycling in Warwickshire

Report on behalf of the Officers Group

Summary

The report gives information on the communications planned to address the results of the Waste Composition Analysis. The analysis highlighted key materials which are still present in the residual waste despite their being a recycling or food waste collection in place. Different collection areas are focussing on different materials with an overall Slim Your Bin campaign planned for the autumn.

Recommendation

The Waste Partnership is asked to support the work going on to reduce the amount of food waste and recycling in the residual bin.

1. Introduction

- 1.1 At the waste partnership meeting on 8th March a presentation was given on the results of the waste composition analysis carried out in summer 2010.
- 1.2 The results highlighted the following:-
 - (i) Capture rates for garden waste are good for all authorities
 - (ii) Food waste capture is low in areas with a collection scheme
 - (iii) Dry recyclables like paper, cardboard, plastics, cans and glass capture rates vary with the potential for greater capture of different materials in different collection authority areas.
- 1.3 A Communications meeting was held on 22 March where possible campaigns were discussed. Further Communications meetings are taking place. A draft strategy was agreed subject to the Partnership's support.

2. Overall Campaign

- 2.1 It was agreed that an overarching **Slim your Bin** campaign would be promoted across the County. This will allow for each district to promote materials that were high in the waste composition analysis.
- 2.2 The overall **Slim your Bin** campaign will use the social media Facebook and twitter and a recycle for Warwickshire newsletter email. Residents will be able to pledge on line to slim their bin. In return a waste reduction pack will be sent out to residents (electronically or hard copy). Residents signing up will be put into a prize draw (prize yet to be decided). The option of having an online pledge system is being explored subject to support from IT.

3. Food Waste

- 3.11 Food waste is seen as a key area for campaigns to focus for the next year.
- 3.12 To reduce food waste in the residual bins all areas are continuing to take part in the **Love Food Hate Waste** Campaign. Community engagement packs have been funded by the Love Food Hate Waste West Midlands Regional Campaign, which can be used by community groups to spread the message. A rolling calendar of press releases regarding food waste will be sent out over the year.
- 3.13 **Home Composting** will be promoted countywide through workshops including a free compost bin or reduced price green cone (these are able to accept all food waste). These workshops will be run by the Master Composters who can give on going support and a dedicated website Master Composters website will be set up so people can find their local Master Composter and ask questions. Warwickshire have a limited supply of green cones and residents will be able to purchase these for £25 (normally £69). Green Johannas are also being considered to be provided to residents at a reduced price.
- 3.2 SDC, RBC and WDC are working on a newspaper wrap around to be printed during Recycle Now week (20 June), including a pictorial guide of how to recycle food waste.
- 3.3 WDC are **promoting food waste** capture using a caddy giveaway and hopefully compostable promotion/giveaway. The compostable bag company will be able to set up a supplier network, so that residents will be able to easily buy the compostable bags.
- 3.4 SDC will promote **food waste collections** (joint initiative with waste collection contractor) summer 2011.
- 3.5 RBC are to roll out **bin labels** to cover the 'no food waste' on the green bins to ensure residents are clear that food waste should be placed in the green bins. RBC also looking into promoting compostable liners.
- 3.6 RBC will be installing livery onto **collection vehicles** to promote food waste being placed in the green bins.

- 3.7 NWBC will increase promotion of **home composting** and **green cones** to capture food waste.
- 3.8 NBBC are considering whether to include food waste collections in the new service in October 2011. If this goes ahead they will potentially provide a trial pack of liners and set up a supplier network.
- 3.9 NBBC are to promote **Love Food Hate Waste** within children centres.

4. Glass

- 4.1 NWBC had a lower capture rate of glass and would like to promote glass recycling to residents. If funds were available this would be through some door knocking.
- 4.2 WDC carried out a trial of **separate collection of clear and coloured glass** at the kerbside – unfortunately the set up costs for vehicles and the depot did not make this feasible.

5. Paper

- 5.1 **Junk Mail** can be reduced through promoting signing up to the Mailing Preference Service. The composition analysis showed that some leaflets, envelopes and glossy paper is not being recycled and some residents may be unsure of whether junk mail can be recycled. These promotions may help to reduce the amount being generated and thrown away.
- 5.2 NWBC had a lower capture rate of paper and would like to promote paper recycling to residents. If funds were available this would be through some door knocking.

6. Cans and Foil

- 6.1 **Every can counts** have been working with all the collection authorities on promoting can recycling on the go. The campaign is funded by the can industry and have been able to support resources and staff for various road shows.
- 6.2 **Aerofoil** funding has been awarded to promote the recycling of aerosols and foil in the kerbside scheme. Bus advertising for a period of 4 weeks will be purchased along with banners for collection vehicles.
- 6.3 SDC are carrying out targeted **aerosol/aluminium recycling** promotion – June/July 2011.
- 6.4 WDC are focusing on the materials with low capture including **aerosols/foil**.
- 6.5 NBBC are currently planning an “**Every can counts**” campaign.
- 6.6 RBC are installing Recycling on the Go banks in the Town Centre and planning a launch event in association with the ‘Every Can Counts’ campaign.

7. WEEE (Waste Electrical and Electronic Equipment)

- 7.1 **WEEE Recycling** is now available at recycling banks in NBBC, NWBC, RBC and WDC and promotion of these banks will continue.
- 7.2 Stratford District are working with DHL to arrange some bring events for WEEE.
- 7.3 DHL are also providing a educational pack for schools from September 2011. This will give the schools the opportunity to look in more depth at WEEE recycling.
- 7.4 NBBC are running a kerbside collection of small WEEE from 3,000 households until September 2011.

8. Textiles

- 8.1 WDC are promoting **textile recycling** (supporting guide dogs for the blind).
- 8.2 RBC will be promoting a kerbside textile collection working in association with local community groups.

Enquiries: about this report should be made to Laura Vesty or Emily Martin from the Waste Management Group on 01926 41 8064. E-mail lauravesty@warwickshire.gov.uk or emilymartin@warwickshire.gov.uk

Background Papers

None

Report Author: Laura Vesty/Emily Martin
Heads of Service: Martin Stott/Louise Wall
Strategic Directors: Paul Galland